

**NOW LEASING**

# RIDGEVIEW II

OFFICE CENTER

Space available for lease in RidgeView Office Center II, a Class A office building conveniently located within RidgeView Corporate Park in the City of Pewaukee.



N19 W23993 Ridgeview Parkway West, Waukesha, Wisconsin 53188

- 56,800 square foot building can accommodate large and small users with an efficient floor plan
- Two story atrium and richly appointed lobby
- Tremendous access to Interstate 94 via two major freeway interchanges and located on Highway 164
- Directly adjacent to a wooded nature conservancy
- Excellent proximity to retail, hotels and restaurants
- Building security includes a card access system and security cameras

*For More Information  
Please Contact*

**Caroline Brzezinski**  
(262) 506-6204  
cb@interstatepartners.com

**Jeff Whipple**  
(262) 506-1007  
jwhipple@interstatepartners.com



## Interstate Partners LLC

N16 W23217 Stone Ridge Drive • Suite 120 • Waukesha, WI 53188 • Tel: 262.506.1000 • Fax: 262.506.1001 • [interstatepartners.com](http://interstatepartners.com)

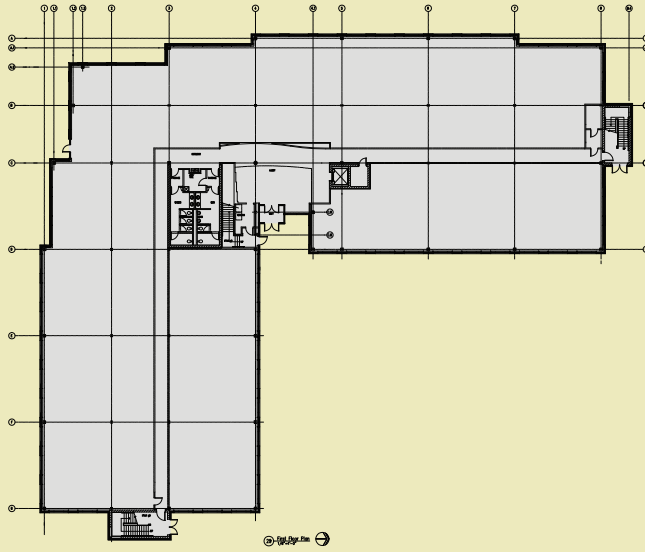
# RIDGEVIEW II

## OFFICE CENTER II

RIDGEVIEW  
CORPORATE PARK



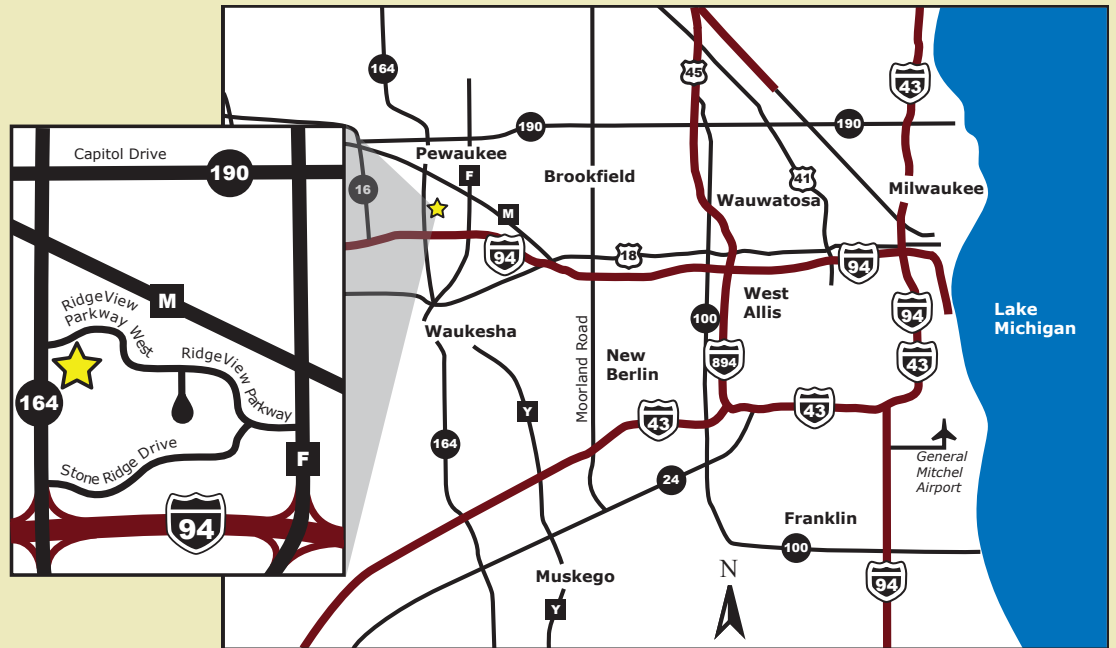
RidgeView Corporate Park is an architecturally and landscape controlled business park, naturally complemented by wooded terrain



Typical Floor Plan



Main Lobby



N19 W23993 Ridgeview Parkway West, Waukesha, Wisconsin 53188

For More Information  
Please Contact

**Caroline Brzezinski**  
(262) 506-6204  
cb@interstatepartners.com

**Jeff Whipple**  
(262) 506-1007  
jwhipple@interstatepartners.com

A Joint Venture between Interstate Partners LLC and Zilber Property Group



# Interstate Partners LLC

N16 W23217 Stone Ridge Drive • Suite 120 • Waukesha, WI 53188 • Tel: 262.506.1000 • Fax: 262.506.1001 • interstatepartners.com